

REFERENCIAS

903S101

VARILLA ROSCADA INOX M6
1000MM

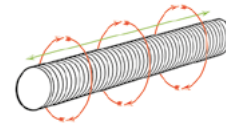


Referencia - Descripción

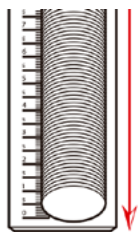
903S101 - Varilla roscada inoxidable M6 1000mm

Características / Especificaciones Técnicas

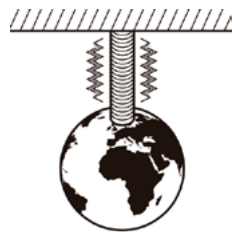
| |
|----------|
| AISI 304 |
| DIN975 |
| INOX A2 |



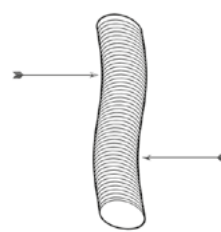
Maleable



Enderezada



Resistente



Maleable



Paso Rosca Uniforme

Uso

Permite su uso en zonas de exteriores